

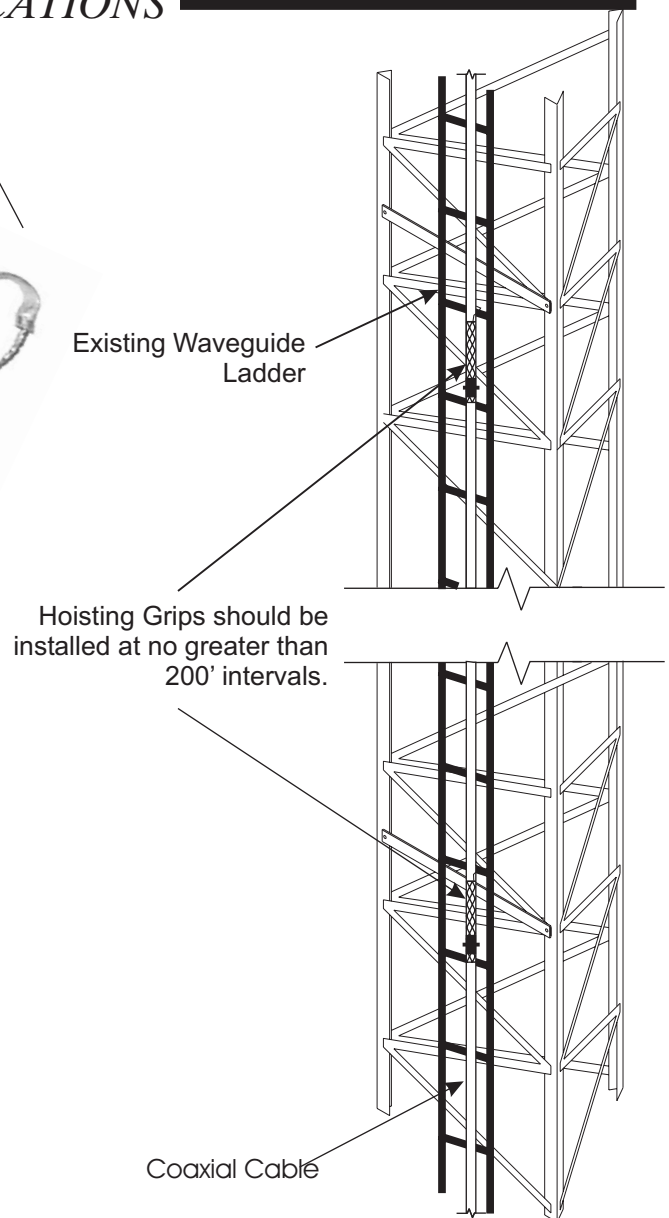
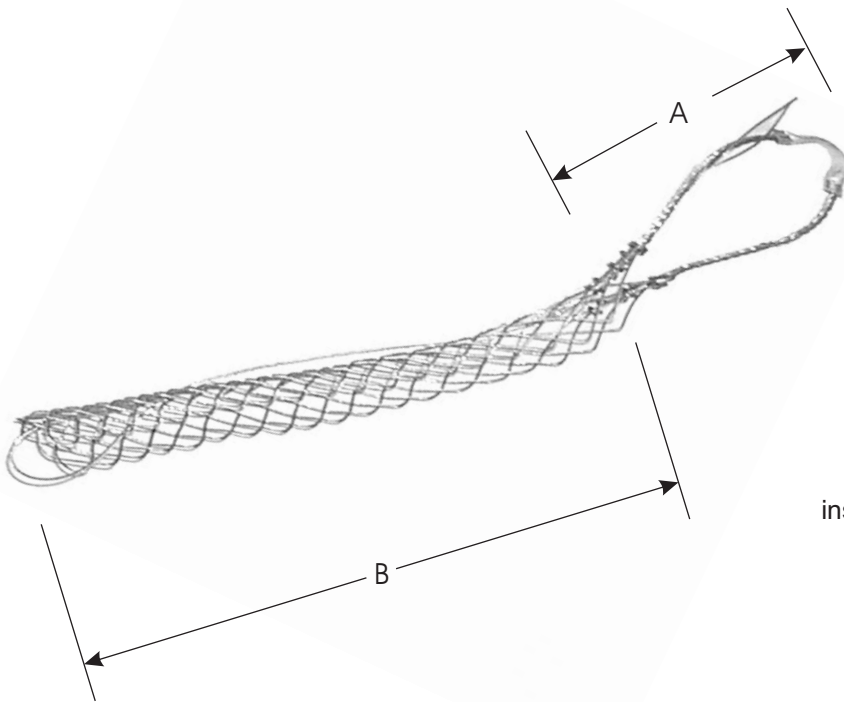
**Lace-Up Hoisting Grips
for Coaxial Cable Applications**

1164 PR G (Pg. 1 of 2)

PRODUCT DESCRIPTION

Lace-Up Hoisting Grips provide an effective means for hoisting coax into position. The lace-up design allows the hoisting grip to be attached when the run has been connectorized and facilitates easy positioning at 200' increments on long coax runs. Lace-Up Hoisting Grips are manufactured from tin-coated bronze.

TYPICAL APPLICATIONS



NOTE:

Once the cable is hoisted into position, hoisting grips should be fastened to the structure to provide support for the cable. It is not recommended that hoisting grips be reused due to possible hoisting grip failure.

SPECIFICATIONS

1164 PR G (Pg. 2 of 2)

LACE-UP HOISTING GRIPS						
Part #	Description	"A"	"B"	Range	Wt. Lbs. (kg)	Kit Qty
HG-12	Lace-up Hoisting Grip for 1/2" Corrugated, Cell Reach™, AirCell™ and LMR-600 Coaxial Cable	7" (17.8cm)	8" (20.3cm)	.62" (15.7mm) - .74" (18.8mm)	.3 (.14)	Each
HG-58	Lace-up Hoisting Grip for 5/8" AirCell™ and LMR-900 Coaxial Cable	7" (17.8cm)	22" (55.9cm)	.75" (19.1mm) - .99" (25.1mm)	.4 (.18)	Each
HG-78	Lace-up Hoisting Grip for 7/8" Corrugated, Cell Reach™, AirCell™ and LMR-1200 Coaxial Cable	12-1/2" (31.75cm)	21-1/2" (54.6cm)	1.0" (25.4mm) - 1.24" (31.5mm)	.6 (.27)	Each
HG-114	Lace-up Hoisting Grip for 1-1/4" and LMR-1700 Coaxial Cable	12" (30.5cm)	25" (63.5cm)	1.5" (38.1mm) - 1.74" (44.2mm)	.6 (.27)	Each
HG-158	Lace-up Hoisting Grip for 1-5/8" and Corrugated Coaxial Cable	15" (38.1cm)	30" (76.2cm)	1.75" (44.5mm) - 1.99" (50.5mm)	1.3 (.59)	Each
HG-214	Lace-up Hoisting Grip for 2-1/4" and Corrugated Coaxial Cable	17-1/2" (44.5cm)	19" (48.3cm)	2.0" (50.8mm) - 2.49" (63.2mm)	1.3 (.59)	Each

Hoisting Grip Materials:

Tin-coated Bronze Wire which is corrosion resistant for normal outside use.



The Americas
Tel: +1.203.759.3744
Fax: +1.203.759.3748

Europe
Tel: +31.(0)77.3961840
Fax: +31.(0)77.3961849

Asia
Tel: +65.6899.9282
Fax: +65.6566.7913

...Consider it Done!

ISO 9001:2000 Registered